

*Bench Top
Wire Processing
Products*

Fall Catalog 2006

The first name in wire processing
ARTOS
ENGINEERING COMPANY



Artos— *The First Name in Wire Processing*

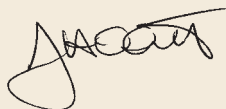
Artos Engineering developed the world 's first automatic wire processing machine in 1926, and has been the leading supplier in the field ever since. We are firmly committed to maintaining that position.

Today's sophisticated Artos wire processing systems are solidly based on the knowledge acquired over those decades of experience. We manufacture and market a variety of highly productive, easy-to-use, competitively-priced machines of unsurpassed quality, reliability, versatility and designed-in flexibility.

Artos pioneered the application of computerized electronic control to servo-driven, pneumatic/mechanical wire processing equipment, and this work is continuing today. Of course, our ongoing goal is to provide the best solutions for your wire processing requirements.

While predicting the future is always risky, we're convinced that in the years to come, automated manufacturing systems will become more and more widespread—throughout industry and around the globe. As the human labor element is diminished, our products will be expected to contribute more and more to those systems.

Accordingly, we are increasing our efforts to work even more closely with our customers, striving to become more flexible and more responsive to your needs. Above all, we want the machines we sell to deliver the consistent production and quality you must have, in order to succeed and prosper in the global community.



John H. Olsen II
President & CEO



Table of Contents:

<i>Cutting Equipment - Wire</i> ...3	<i>Crimping Equipment</i> ...9
<i>Cutting Equipment - Flat Material Tubing</i> ...4	<i>Cutting & Stripping Equipment</i> ...10
<i>Stripping Equipment - Discrete Wire</i> ...5	<i>Cutting & Stripping Equipment</i> ...11
<i>Stripping Equipment - Multi Conductor & Large Cable</i> ...6	<i>Wire Prefeeding Equipment</i> ...12
<i>Stripping Equipment - Specialty</i> ...7	<i>Wire Marking Equipment</i> ...13
<i>Crimping Equipment</i> ...8	<i>Wire Collection Equipment</i> ...14

Note: Specifications are subject to change without notice, and exceptions may apply depending on application, wire and other variables.
Optional equipment may require standard machine modification and/or later specifications.

Contact us for any of your machine needs at:

Artos Engineering Company

P.O. Box 1650, Waukesha, WI 53187 U.S.A.

Phone (262) 524-6600 • FAX (262) 524-0400 • www.artosnet.com

e-mail: sales@artosnet.com

**WIRE AND
 CABLE CUTTER**

**MODEL
 45-048**

- Perfect for low volume processing of wire and cable.
- Foot pedal operated.
- Maximum blade opening is 1 in. (25.4mm). Blade is 3-1/2 in. (88.9mm) long.
- Shears wire and cable up to 1 in. (25.4mm) diameter and bundles of small wires of aluminum or copper with absolute minimal conductor distortion.



Technical Data

Wire Size: To 1 in. (25.4mm) diameter (wire dependent)
Cut Length: Wire Stop is adjustable to 16 in. (406mm). Longer cut lengths can be achieved by removing the wire stop.
Dimensions: Length: 9.625 in. (245m) Width: 4 in. (102mm) Height: 7.5 in. (190mm) w/guard closed
Weight: 12 lbs. (5.5 Kg)

**WIRE
 PREPPER® LITE**

**MODEL
 45-725/45-730**

- Automatically measures, cuts and counts #10 stranded to #30 AWG wire and up to 5/16 in. O.D. multi-conductor cable, tubing and heat shrink.
- Light weight and portable – weighing less than 20lbs. It is an ideal bench top productivity tool.
- Complete set-up change in less than one minute – including changing wire reel.
- Fully electronic user-friendly controls with a negligible learning curve to master.
- Equipped with heat treated steel blades for long life and repeatable clean cuts.
- Utilizes powerful motor drive to actuate cutting blades for consistent, square cuts.
- All electric design eliminates pneumatic requirements.
- Data entry can be in either inch or metric measuring systems.
- Requires no tools for set-up or operation.
- Low investment cost and high productivity makes for a quick pay-back and ROI – perfect for job shops.



Technical Data

Cut Lengths: Minimum: .06 in. (1.6mm) Maximum: 9,999.99 in. (25M)
Cut Quantity: Minimum: 1 Maximum: 9,999
Cut Capacity: Wire: #30 AWG (.05mm²) min. #10 AWG (6mm²) stranded Cable: Up to 5/16 in. (7.9mm) O.D. Multi conductor
Drive Speed: 50 FPM (15.4 MPM)
Feed Wheel: Tungsten carbide grit coated
Cutting Mechanism: Geared motor drive

Programming: User-friendly LCD display with membrane panel data entry panel data entry
Accuracy: Approximately 2% of wire length (wire dependent)
Voltage: 120V or 220V reversible fuse 50Hz or 60Hz
Dimensions: Width: 9.5 in. (241mm) Depth: 9.5 in. (241mm) Height: 8.0 in. (203mm)
Weight: 14.5 lbs. (7.9 Kgs)

Production Rate

Cut Lengths	Pieces/Hour
1/4 in. (6.4mm)	13,700
1/2 in. (12.7mm)	12,500
1 in. (25.4mm)	10,700
10 in. (254mm)	2,900
20 in. (508mm)	1,600
40 in. (1016mm)	840
100 in. (2540mm)	350

**WIRE PREPPER®
 SYSTEM II**

**MODEL
 45-700/45-705**

- Automatically measures, cuts and counts medical grade tubing, heat shrink, rubber cable, #30 to #10 AWG wire and up to 3/8 in. O.D. power cable.
- Complete set-up change in less than one minute – including changing wire reel.
- User friendly prompting controls require little training.
- Stores up to 99 batch programs for quick, easy access to frequently run jobs.
- Equipped with heat treated steel blades for longer life with optional ceramic and carbide blades available.
- Utilizes powerful motor drive to actuate cutting blades for consistent, square cuts.
- Equipped with automatic cut-off switch when cover is lifted to maximize operator safety.
- Programmable in inch or metric measuring systems.
- Encoder provides improved length consistency



Technical Data

Cut Lengths: Minimum: .06 in. (1.6mm) Maximum: 9,999.99 in. (25M)
Cut Quantity: Minimum: 1 Maximum: 9,999
Cut Capacity: Wire: #30 AWG (.05mm²) min. #10 AWG (6mm²) stranded Cable: Up to 3/8" (9.5mm) O.D. Multi conductor
Drive Speed: 50 FPM (15.4 MPM)

Feed Wheel: Tungsten carbide grit coated
Cutting Mechanism: Geared motor drive
Programming: User-friendly LCD display panel data entry
Accuracy: Approximately 1% of (wire dependent)
Voltage: 120V or 220V reversible fuse 50
Dimensions: Width: 9.5 in. (241mm) Depth: 9.5 in. (241mm) Height: 8.0 in. (203mm)
Weight: 14.5 lbs. (7.9 Kgs)

Production Rate	
Cut Lengths	Pieces/Hour
1/4 in. (6.4mm)	17,100
1/2 in. (12.7mm)	15,600
1 in. (25.4mm)	11,400
10 in. (254mm)	4,640
20 in. (508mm)	3,270
40 in. (1016mm)	1,860
100 in. (2540mm)	830

**MULTI-PURPOSE
 MEASURE & CUT-OFF
 MACHINE**

**MODEL
 C-8**

- Microprocessor Controlled
- Material Run-Out Sensor
- Inch or metric measurement
- Length Calibration Capability
- Reversible Blades
- All Electric Design

The C-8 compliments our popular C-4 and C-5 cutters by offering an economical option that maintains the quality that is inherent to Artos products. The C-8 optimizes performance and value with a system that drives both feed rollers to protect the material being processed and ensure precise lengths of cut material. Each blade has two cutting surfaces doubling the blade life.



Technical Data

Cutting Width Max:
 100 mm (3.94")
Maximum Feed Rate:
 300 mm (11.81") per second
Material Length:
 10 mm (.394") - 10,000 mm (393.7")
Power Supply:
 110V, 1 ph, 60 Hz or 230V, 1ph, 50 Hz
Dimensions:
 344 x 390 x 200 mm
 13.5" x 15.4" x 7.9"
Weight:
 10.5 kg (23 lbs)

**MULTI-PURPOSE
 MEASURE & CUT-OFF
 MACHINES**

**MODEL
 C4/5**

- **Material Guides:** Available with multiple feeds for increased production.
- **Material Control:** Variable speed drive to suit weight and size of material. Adjustable acceleration/deceleration of the feed rate prevents material slippage.
- **Pneumatic Features:** Feed roller pressure is pneumatically controlled. The cutting action is also pneumatic and adjustable for different power requirements.
- **Scissors Cut:** Cutting is performed in a "scissors" like progressive cut, providing optimal cutting force.
- **Flexibility:** The power and capacity of the C-4 and C-5 enable them to measure and cut a variety of materials
- Programmable in inch or metric



Technical Data

C-4 & C-5 Specifications
Length: Both machines —
 Maximum: 3,000 ft (999 mm)
 Minimum: .04 in (1mm)
Cutting Width:
 C-4 — 5⁷/₈" , 150 mm
 C-5 — 13¹/₂" , 343 mm
Material Thickness:
 C-4 — 1¹/₂" , 12,7 mm
 C-5 — 1¹/₄" , 6,3 mm
Feed Rate: Both machines — variable
 from 6.4" to 100"/sec (0,16 to 2,5 m/sec)
 with adjustable acceleration/
 deceleration ramps.
Weight:
 C-4 — 135 lbs. (61,3 kg)
 C-5 — 160 lbs. (72,7 kg)

PRODUCTION RATE

Length of Material	Cuts per Hour*		Length of Material	Cuts per Hour*	
	C-4	C-5		C-4	C-5
1/4 in (6mm)	11,500	11,500	10 in. (255 mm)	7,500	5,750
1 in. (25 mm)	10,900	10,300	30 in. (762 mm)	5,450	4,050
2 in (50 mm)	10,300	8,800	60 in. (1524 mm)	3,740	3,000
5 in (125 mm)	9,045	7,250	200 in.(5080) mm	1,570	1,380

Size:

C-4	C-5
Length: 25" (635 mm)	Length: 25" (635 mm)
Width: 12" (304 mm)	Width: 20" (508 mm)
Height: 14" (355 mm)	Height: 14" (355 mm)

**CORRUGATED TUBING
 CUTTING SYSTEM**

**MODEL
 C-9**

- Designed to cut **unslit** corrugated tubing from 7 to 32 mm (.275 - 1.25 inch) in diameter
- Unique cutting process allows for cutting exactly on the "peak" of the tubing, providing a clean cut completely around the tube.
- Offers quick change of guides (less than 2 minutes), for running tubing of various sizes.
- Integrated slitting unit to optionally slit tubing after cutting process



Technical Data

Corrugated Tubing:
 Standard Unit - 7-32mm (.275-1.25 in)
 W/Large Guide Kit - 10mm-60mm (.390-2.3 inch)
Servo Belt Feed:
 Up to 1 meter/sec.
Lengths:
 To 99.999 Meters (3,937 Inch) Includes 6 guide sets
Dimensions:
 900 x 500 x 1800 (35.5 x 19.7 x 70.9 Inch)
Weight:
 225 Kg (495 Lbs.)
Power Requirements:
 3 x 400V/50 or 60 Hz./16A
Air Requirements:
 6 Bar (80 PSI)

POWER WIRE STRIPPER

MODEL
45-146

- Instant, accurate, effortless stripping of 8 to 30 AWG (8mm² Nom. to .050mm² Nom.) wire.
- Performs medium to high volume stripping with minimal investment.
- Utilizes pneumatic power with foot pedal actuation.
- Can be purchased as complete kit with foot pedal, hook-up kit and air blast.
- Accepts die blades for Teflon and other difficult insulation.
- Includes L-4421 blades for stripping 10 - 22 AWG



Technical Data

Wire Size:
 8 - 30 AWG (8mm² - 0.05mm²)

Wire Strip Length:
 Wire Stop Adjustable to 0.625 in. (15mm)
 Longer partial strips can be achieved by removing the wire stop.

Air Requirements:
 60 - 100 PSI (4-7 BAR)

Dimensions:
 Length: 3.625 in. (92mm)
 Width: 14.125 in. (359mm)
 Height: 4 in. (102mm)

Weight:
 6.5 lbs. (3 Kg)

Knife Blades - For General Purpose Stripping											Knife Blades - For General Purpose Stripping																									
Hole Diameter (inches) for each AWG											Hole Diameter (mm) for each mm ²																									
Blade #	8	10	12	14	16	18	20	22	24	26	28	30	Blade #	10.00	6.00	4.00	2.50	1.50	1.00	0.50	0.22	0.20	0.13	0.08	0.05											
L-4419	0.159	0.141	0.106	8-12AWG										L-4419	4.04	3.58	2.69	10-4mm ²																		
L-4420	0.144	0.105	0.085	0.073	10-16AWG										L-4420	3.66	2.67	2.16	1.85	1.85																
L-4421	0.144	0.113	0.09	0.072	0.061	0.048	0.048							L-4421	3.66	2.87	2.29	1.83	1.55	1.22	1.22															
L-4422	For SP - SPT		0.09	0.072	0.061	0.039	0.039							L-4422	For SP - SPT		2.29	1.83	1.55	0.99	0.99															
L-4452											0.072	0.061	0.048	0.039	0.032	0.026								L-4452												
L-4994											0.048	0.039	0.032	0.026	0.021	0.016								L-4994	1.83	1.55	1.22	0.99	0.813	0.66						
L-5361											0.048	0.039	0.032	0.026	0.021	0.016								L-5361	1.22	0.99	0.813	0.66	0.533	0.406						

PRECISION ROTARY STRIPPERS

MODEL
45-211A/45-213A

- Precision, nick-free stripping of 16 to 28 AWG (1.5mm² Nom. To 0.8mm² Nom.) wire.
- Single-blade models easily handle stripped insulation grades, including Teflon®.
- Dual-blade handles tight adhering insulation grades, including Kapton®.
- Dual-blade especially good for small gauge wires to 30 AWG. Rotary action of stripping head tightens twist of standard wire.
- Rotation direction can be either clockwise or counter-clockwise to match lay of standard wire.



Technical Data

Single-Blade Precision Rotary Stripper*

Description	Unit	Weight	Cat. No.
120VAC, 60 Hz	1	14.5 lbs.	45-211A
240VAC, 50 Hz	1	14.5 lbs.	45-212A

Dual-Blade Precision Rotary Stripper*

Description	Unit	Weight	Cat. No.
120VAC, 50 Hz	1	14.5 lbs.	45-213A
240VAC, 50 Hz	1	14.5 lbs.	45-214A

*One free guide with every unit. Please specify part # when ordering.

PNEUMATIC WIRE STRIPPER

MODEL
45-940/45-945

- Automatically strips a wide variety of insulation from #30 AWG to #8 AWG (.05mm²-6mm²)
- Electronic cycle control with LCD display monitors strip settings of blade opening and strip length in English or Metric units.
- Standard V-blades for quick and easy adjustment to a wide range of wires.
- Radius V-blades available when precise wire stripping is required.
- Fixed die and knife blades available to meet precise military stripping requirements.
- Accurate, adjustable strip length control allows strips from .060 in. (1.5mm) to 1 in. (25mm) and can be set for partial strips.
- Permanent and resettable cycle counter allows for monitoring production lot quantities and total strips performed.
- Unique guiding and gripping mechanism minimizes operator dependency.
- Clear front cover ensures operator safety and retains slugs.



Technical Data

Strip Length:
 Minimum: .060 in. (1.5mm)
 Maximum: 1 in. (25mm)

Strip Capacity:
 Minimum: #30 AWG (05mm²)
 Maximum: #8 AWG (6.0mm²)

Accuracy: Meets military specifications with die or fixed knife blades in most applications.

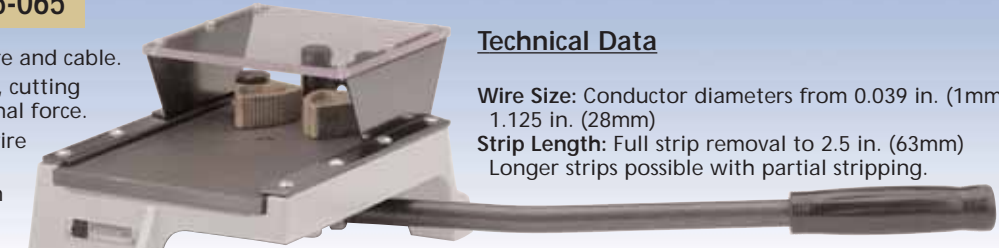
Voltage:
 12V DC required.
 45-940 - 120V/60Hz
 45-945 - for 220V/50

Air Pressure: 60-100 PSI (4-7 bar)

Air Filter: Recommended, but not required.
In-Line Oiler: Not required
Blade Type: Hardened steel V-blades supplied. Heat treated, fixed die or fixed knife or radius blades are available.
Production Rate: 2,200 pieces/hour
Machine Cycle Time: Less than 1 second
Dimensions:
 Width: 4.4 in. (112mm)
 Depth: 12.9 in. (328mm)
 Height: 5.8 in. (147mm)
Weight: 8 lbs. (3.64 kg)
Certifications: CE certified

LEVER STRIPPERS	MODEL 45-064/45-065
------------------------	-------------------------------

- Perfect for low volume processing of wire and cable.
- Long lever swings two knife-type blades, cutting insulation and removing slug with minimal force.
- Round blades will strip down to finest wire provided sufficient insulation thickness.
- Strips multiple wires of same gauge with one stroke using parallel flat blades.
- Strips parallel cable ribbon cable and cable up to 1-1/8 in. (2.86cm) diameter. Strips rubber, plastic (including PCV and polyethylene, fiberglass and fabric insulations).
- Large selection of blades available.



Technical Data

Wire Size: Conductor diameters from 0.039 in. (1mm) to 1.125 in. (28mm)
Strip Length: Full strip removal to 2.5 in. (63mm)
 Longer strips possible with partial stripping.

Dimensions w/o Handle:
 Length: 11 in. (279mm)
 Width: 7 in. (178mm)
 Height: 45-064 5 in. (127mm)
 45-064 5.75 in. (146mm)
Weight: 16 lbs. (7.3 Kg)

Description	Cat. No.
Standard Lever-Stripper	45-064
Large Lever-Stripper	45-065

Note: Blades are not included with base machines.

Standard-Lever Stripper Blades For 45-064 For wire to 0.50 in (12.5mm)
 The following grooved blades are suggested for Standard Lever Stripper.

Hole Dia. in./mm	Cat. No.	Hole dia. in./mm	Cat. No.
Straight (Parallel Blades)	L-3064	.2720/6.90	L-3617
.0390/0.99	L-3616	.2900/7.36	L-3075
.0595/1.51	L-3065	.3125/7.93	L-3076
.0785/1.99	L-3066	.3320/8.43	L-3618
.0995/2.52	L-3067	.3480/8.83	L-3077
.1200/3.05	L-3068	.3680/9.34	L-3619
.1405/3.57	L-3069	.3860/9.80	L-3078
.1610/4.09	L-3070	.4040/10.26	L-3620
.1820/4.62	L-3071	.4210/10.69	L-3621
.2040/5.18	L-3072	.4375/11.11	L-3079
.2280/5.79	L-3073	.453/11.50	L-3622
.2500/6.35	L-3074	.468/11.88	L-3628

Large-Lever Stripper Blades For 45-065 For wire to 1.125 in (28mm)
 The following grooved blades are suggested for Large Lever Stripper.

Hole Dia. in./mm	Cat. No.	Hole dia. in./mm	Cat. No.
Straight (Parallel Blades)	I-6561	.625/15.88	I-6543
.312/7.92	I-6559	.650/16.51	I-6544
.348/8.84	I-6558	.700/17.78	I-6545
.386/9.80	I-6557	.750/19.05	I-6546
.400/10.16	I-6556	.800/20.32	I-6547
.421/10.69	I-6555	.850/21.59	I-6548
.435/11.05	I-6537	.880/22.35	I-6549
.468/11.87	I-6538	.925/23.50	I-6550
.500/12.70	I-6539	.960/24.38	I-6551
.525/13.34	I-6540	1.000/25.40	I-6552
.560/14.22	I-6541	1.070/27.18	I-6553
.600/15.24	I-6542	1.125/28.58	I-6554

LARGE WIRE ROTARY STRIPPER	MODEL 45-199/45-200
-----------------------------------	-------------------------------

- Processing of larger wires and cables to .750 in. (19mm) diameter.
- Dual blade ensures clean, square cuts.
- Blade depth is secured by a locking screw to eliminate nicking.
- Wire guides are changed easily and without tools.
- Value priced to minimize investment.



Technical Data

Wire Size: .120" to .750" Insulated OD (3mm-19mm)
Strip Length: Up to 5.5" (139.5mm) (Remove stop-rod and post for longer strips)
Voltage:
 115 VAC, 60 Hz, 1.4A (45-199)
 220 VAC, 50 Hz, .54A (45-200)
Dimensions:
 6" H x 9" W x 10.5" D
 153mm H x 229mm W x 267mm D
Weight:
 11.5 lbs (5.3 Kg)

Description	Cat. No.
Large Wire Rotary Stripper 115V	45-199
Large Wire Rotary Stripper 220V	45-200

HEAVY DUTY PNEUMATIC STRIPPER	MODEL AM-1/2
--------------------------------------	------------------------

- All-pneumatic operation for powerful and reliable results.
- Easy wire loading & operation.
- Adjustable strip control for V-style stripping blades.
- Flexible blade configuration for difficult applications.



Technical Data

AM-1
Strip Length: 3/16" - 2 1/2" (4 - 63mm)
Max Wire Size: 4 AWG (20mm²) 1/2" (12mm) O.D.
Weight: 42 lbs. (19 kg)
Dimensions: 12" x 13.5" x 6"
 (305 x 343 x 153mm)
Air Requirement: 80 PSI (5,5 Bar)

AM-2
Strip Length: 3/16" - 4 3/4" (4 - 120mm)
Max Wire Size: 0000 AWG (100mm²) 1" (25mm) O.D.
Weight: 64 lbs. (29 kg)
Dimensions: 17" x 21.6" x 7.9"
 (431 x 549 x 201mm)
Air Requirement: 80 PSI (5,5 Bar)

ROTARY COAXIAL CABLE STRIPPER **MODEL 45-201/45-204**

- Three separate stripping heads for three stage stripping.
- Stripping length easily adjusted without tools.
- Wire guides are interchangeable between all three stripping heads.
- Simple operation allows for minimal training.
- Value priced to minimize investment.



Technical Data

Wire Size:
.028" to .265" Insulated OD (.7mm-6.7mm)

Strip Length:
Up to 3" (76.1mm)

Voltage:
115 VAC, 60 hz, 1.4A (45-201)
220VAC, 50 hz, .54A (45-204)

Dimensions:
6.125" H x 11.750" W x 10.750" D
156 mm H x 300mm W x 275mm D

Weight:
13 lbs (5.9 Kg)

Description	Cat. No.
Rotary Coaxial Cable Stripper 120V, 60hz	45-201
Rotary Coaxial Cable Stripper 220V, 50hz	45-204

TWIN WHEEL STRIPPERS **MODEL 45-159A/45-269A**

- Heavy duty design for challenging stripping applications.
- Uses various grades of wire and fiberglass brushes to strip wire from 8 to 46 AWG (8.37 mm² Nom. To .001mm² Nom.).
- Handles any known film insulation type.
- Removes oxides from component leads quickly and easily.
- Finger guard protection maximizes operator safety.
- Wheel opening is easily adjusted without tools.



Technical Data

Wire Size:
4-46 AWG (25 mm² - 0.001mm²)
(wire dependent)

Wheel Opening:
Adjustable to 0.40 in. (10mm)

Dimensions:
Length: 10.75 in. (723mm)
Width: 13.625 in. (346mm)
Height: 6.75 in. (172mm)

Weight:
17 lbs (7.7 Kg)

Description	Unit	Weight	Cat. No.
Twin Wheel Stripper, 115VAC, 50/60Hz	1	-	45-159A
Twin Wheel Stripper, 220VAC, 50/60Hz	1	-	45-269A
Fiber Glass Wheel, General Purpose 25-46 AWG Wire	Pr.	3 oz.	L-6063

FIBER CONE STRIPPERS **MODEL 45-157A/45-267A**

- Cones remove all types of film wire insulations.
- Design enables wire stripping to within 1/7 in. (3.2mm) of small parts coils, armatures, etc.
- Finger guard assures operator safety.
- Ideal for transformer coil, motor, alternators or generator manufacturing or repair application.
- Cone width is easily adjustable without tools.



Technical Data

Wire Size:
30-46 AWG (0.05 mm² - 0.001mm²)
(wire dependent)

Wire Size:
From 0.125 in. (3.2mm)

Cone Width:
Adjustable to 0.200 in. (5mm)

Dimensions:
Length: 7.25 in. (185mm)
Width: 11.75 in. (299mm)
Height: 6.50 in. (165mm)

Weight:
14 lbs (6.4 Kg)

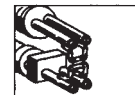
Description	Unit	Weight	Cat. No.
Fiber Cone Stripper, 115VAC, 50/60Hz	1	-	45-157A
Fiber Cone Stripper, 220VAC, 50/60Hz	1	-	45-267A
Fiber Glass Cones, General Purpose 35-46 AWG Wire	Pr.	1 oz.	L-5279
Fiber Glass Cones, Medium/Heavy Purpose 30-35 AWG Wire	Pr.	1 oz.	L-5446

THERMO-STRIP® WIRE STRIPPER **MODEL 45-130**

- Adjust the heat up to 1800°F (982°C) for the precise amount you need for the specific application.
- Long nose allows reach into hard-to-reach areas.
- Five different preformed heated elements are available to strip many sizes of insulation from 36 AWG to 3/8 in. diameter.
- Can be used as a hand tool or bench top stripper.
- Total unit weighs less than 7 lbs.
- Can change just the heating element, rather than entire tip, reducing operating costs.

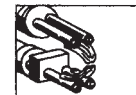


Standard



Medium and Heavy-Duty Element, L-5589 & L-5597

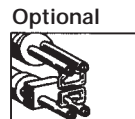
Optional



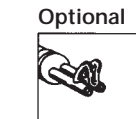
Restricted Area Element, L-5751



Element for 3/32 in. to 5/16 in. dia. wire, L-5752



Element for flat and extra wide multi-wire, L-5753



Element for Single Loop Tool-Medium Duty, L-5599

PNEUMATIC CRIMPING UNIT

MODEL LTC-1

- Portable bench top pneumatic terminal crimping unit designed to crimp loose terminal onto hook-up wire, coaxial wire, and flat modular communication cable.
- Designed to be compact and powerful, the LTC-1 delivers up to 1200 lbs. (@ 100 PSI) of crimping force to ensure a tight quality crimp. Due to the unit's efficient size and light weight, it can be easily moved from one work area to another.
- Utilizes interchangeable crimping dies that are both affordable and available for most common applications.
- Change-over of crimping dies is simple and easy, and can be accomplished in a matter of seconds.



Technical Data

Air Supply: 80—100 PSI (5.4 – 6.8 BAR)
Dimensions: 4 x 6.75 x 11.5 inch (102 x 172 x 293 mm)
Weight: 15 lbs. (6.8 Kg)
Crimping Force: Up to 1200 lbs (545 Kg) @ 100 PSI Supply
Terminal Uses: Insulated and un-insulated ring and forks, F-crimp loose terminals, modular communication plugs, Coaxial connectors, pin connectors, splice terminals, fiber optic connectors
Wire Range: Up to 8 AWG (4 – 8 mm²). Wire range will vary depending on terminal type and wire design

CRIMPING DIE

GLOBAL-STAR 950/951/952

- Features an integrated pneumatic feed system offering superior performance.
- Pneumatic feed provides for smooth feeding of the terminal and adjustment of the feeding speed. These features reduce potential mis-feeds common to mechanical feed systems.
- Setting of the feeding stroke and pick-up location is easily adjusted by simply setting the stop nuts on the linear slide.
- Includes cycle counter for preventative maintenance



Technical Data

Pneumatic Feed: Improves crimp monitor systems by eliminating force "noise" caused from the feeding cams in the mechanical die unit
Tooling and Anvils: Are easily changed due to the innovative design
Crimping Heights: Conductor and insulation crimps can be independently adjusted in increments of 0.050 inch (0.02 mm)
Global Star Family Dies: Can crimp wires from 28 – 10 AWG (.08 – 6.0 mm)
 — Available for side feed & end feed terminals

CRIMPING DIE

MODEL QUICK DIE

- High quality robust design
- Entire unit snaps in and out of the press using a quick release mechanism
- Feed stroke and terminal tracks are easily adjusted
- Insulation and conductor crimp tools are independently adjustable
- Wire gathering fingers can be built into the die to assure correct wire placement
- Tooling made to each customer's exact specifications



Technical Data

Feed Direction: Left to right
 Right to Left
 End to End
Stroke: 38, 1 mm (1.5 inch) (Min.)
Mount: Snap in
Feed: Mechanical on up or down stroke

PROGRAMMABLE CRIMPING MACHINE

MODEL TU-10

- Servo driven-control
- Programmable stroke 0-40mm
- Optional programmable crimp height
- Optional crimp force monitor
- Accepts most die units
- Optional PC interface
- Optional pneumatic feed



Technical Data

Press Stroke: Programmable 0 to 40 mm (0 - 1-5/8")
Crimp Height: Micro adjust (optional programmable) +/-2.5 mm from nominal
Force Rating: 2500 lbs or 5000 lbs (1100 Kg or 2200 Kg)
Power Requirements: 110V or 220V, 1 Phase, 60/50 Hz.
Air Requirement: Required for Options Only

CRIMPING UNIT

CRIMPMATIC 963

- Effective crimping for high volume reel feed terminals.
- Accepts most die units with 1.625 inch stroke, including Artos Globalstar family of terminal applicators.
- With over 4000 Lbs. of crimping force, the Crimpmatic Model 963 will handle difficult application with ease.
- Features a convenient work light and manual fine adjustment of crimping height to simplify set-up and ease of operation.
- Available with optional crimp quality monitor and reject wire chop off.



Technical Data

Crimping Force: 20 kN (4500 lbs.)

Wire Range: Up to 8 AWG (8mm²) wire and terminal dependent

Stroke (Cycle Distance): 1.625 inch (42mm) Fixed

Shut Height (Lower Dead Center): 5.35 inch (135.78 mm) with Fine Adjustment

Cycle Time: 0.30 Second

Voltage: Single Phase 110V, 60 Hz, or 220V, 50 Hz

Air Supply: 80 PSI (6-8 Bar)

Dimensions: 15.75 x 24.80 x 19.30 inch (400 x 630 x 490 mm)

Weight: 272 lbs. (124 Kg)

STRIPPER CRIMPER

STRIPMATIC 944

- Combines the stripping process with the crimping process to provide improved process quality and efficiency.
- Integrated stripping unit will strip the inserted wire while being held in the crimping position. This process ensures the proper strip length and positioning of the end of the wire in the terminal, improving overall crimping quality.
- Electronically controlled crimping unit features a job button for ease of set-up, and will accept either side feed or end feed terminals.
- Integrates perfectly with our Globalstar Family of terminal applicators.
- Available with optional crimp quality monitor and reject wire chop off.



Technical Data

Crimping Force: 20 kN (4500 lbs.)

Wire Range: 26 - 14 AWG (0,14 – 2,5mm²)

Wire Stripping Length: .04 - .40 Inch (1 to 10 mm)

Stroke (Cycle Distance): 1.625 inch (42mm) Fixed

Shut Height (Lower Dead Center): 5.35 inch (135.78 mm)

Cycle Time: 1.0 Second

Voltage: Single Phase 110V, 60 Hz, or 220V, 50 Hz

Air Supply: 80 PSI (6-8 Bar)

Dimensions: 19.3 x 25 x 21 inch (490 x 630 x 530 mm)

Weight: 293 lbs. (133 Kg)

SEAL STRIP & CRIMP

SEALMATIC 944S

- Offers the additional capability of inserting a weather seal onto the wire.
- With this machine, a cut wire will be stripped, have a loose weather seal inserted on the wire, and crimped.
- All operations are completed without wire movement, ensuring ease of operation and quality.
- Operates exclusively with our Globalstar family of terminal applicators, and accommodates most side feed terminals.
- Available with optional crimp quality monitor and reject wire chop off.



Technical Data

Crimping Force: 20 kN (4500 lbs.)

Wire Range: 26 - 14 AWG (0,14 – 2,5mm²)

Wire Stripping Length: 0.04 - .40 Inch (1 to 10 mm)

Seal Dimensions: Max. 0.4 inch (10 mm), max. length 0.4 inch (10mm)

Voltage: 230V, 50 Hz or 110V, 60 Hz (110V with Transformer) Pneumatic supply: 6 - 8 bar (80 PSI)

Stroke: 41 mm fix (1.625 inch)

Shut Height (Lower Dead Center): 135.78 mm (5.35 inch)
 Cycle time: 2.1 Sec

Weight: 420 lbs. (191 Kg)

Dimensions WxHxD: 19.3 x 28.3 x 30.7 inch (490 x 720 x 780 mm) Noise level: Approx. 70 dBA

PROGRAMMABLE WIRE PROCESSOR

MODEL CS-336

- An all electric wire processing machine which will automatically measure, cut, strip and count thousands of wires per hour.
- Unit is totally electronic and fully programmable featuring memory for up to 99 settings.
- Wire length, stripping lengths, total quantity required and processing speed can all be entered using the simple data keypad.
- Light weight, and is easily moved from work center to work center as needed.
- A full set of wire guides is included, and can be easily changed without tools.
- For added value, consider the 45-712 pre-feeder and WM-6B hot stamp wire marking unit.



Technical Data

Wire Range: 30 – 14 AWG (0,05 – 3mm²) wire dependent

Max. Wire OD: 0.25 inch (6.35mm)

Stripping Length: 0.01 to 0.99 inch (0,25 – 25,4mm) full or partial stripping

Wire Length: .060 – 3,937 Inch (1.4 – 9,999mm)

Wire Length Accuracy (In Standard Length Mode): Standard Deviation less than 0.2% of total wire length (wire dependent)

Max Production Rate @ 10" (250mm) with 1/4" (6.4mm) stripping: 3250/hr. (Application Dependent)

Dimensions: 16 x 13.5 x 9.5 inch (406 x 343 x 241 mm)

Weight: 70 lbs (32 Kg)

Electrical Requirement: 110V or 220V, 50/60 Hz

PROGRAMMABLE WIRE PROCESSOR

MODEL CS-337

- Offering enhanced capabilities, the CS-337 allows for increased wire range processing when compared to our CS-336.
- Fully programmable and all electric, the CS-337 will process wires up to 10 AWG (6 mm²), due to the use of belt feed system and powerful ball screw driven cutter-head.
- Feed belt system also improves processing quality by avoiding wire scuffing caused to roller feed systems.
- Wire length, stripping lengths, total quantity required and processing speed can all be entered using the simple data keypad.
- For added value, consider the 45-712 pre-feeder and WM-6B hot stamp wire marking unit.



Technical Data

Wire Range: 30 – 10 AWG (0,05 - 6mm²) wire dependent

Max Wire O.D.: 0.25 inch (6.35mm)

Stripping Length: 0.01 to 0.99 inch (0,25 – 25,4mm) full or partial stripping

Wire Length: .060 – 3,937 Inch (1.4 – 99,999mm)

Wire Length Accuracy (In Standard Length Mode): Standard Deviation less than 0.2% of total wire length (wire dependent)

Max Production Rate @ 10" (250mm) with 1/4" (6.4mm) stripping: 1800/hr. (Application Dependent)

Dimensions: 16 x 13.5 x 9.5 inch (406 x 343 x 241 mm)

Weight: 70 lbs (32 Kg)

Electrical Requirement: 110V or 220V, 50/60 Hz



**SERVO-DRIVEN WIRE
 PROCESSOR**

**MODEL
 CS-326**

- Integrated safety cover with interlock switch.
- Removable slug collection tray.
- Optional work table with casters
- Push-button operation for all operating functions.
- All wire-related guides can be changed without tools
- All-electric design eliminates pneumatic requirements and reduces maintenance
- Maintenance-free brushless servo motors ensure reliability and long life
- Computerized diagnostics and maintenance screens make troubleshooting easy
- Universal switchable 115/230 VAC 50/60 HZ single phase power
- Belt or roller feed system available



Totally electronic and fully programmable, the CS-326 Servo-Driven Wire Processor is truly a "high-tech workhorse." It features two breakthrough technologies: (1) remarkable microcontroller system that's been custom designed to control the most demanding wire stripping applications; and (2) powerful servo-driven design, able to provide a degree of speed and accuracy that's simply not possible with stepper motor designs.

By combining these two innovations into one electronic design, Artos makes your wire stripping duties fast, reliable and economical. With the optional work table, you can roll this machine up and plug it in near any workstation in your plant.

Technical Data

■ **Wire Size**

Minimum:
 30 AWG (0,05mm) wire dependent

Maximum:
 1/2" (12.5mm) O.D. or 4 AWG (25mm²)
 Optional kit to 5/8" (15mm)

■ **Wire Cutting Lengths**

Minimum:
 1/4" (6.4mm)

Maximum:
 3900" (100M)

■ **Wire Stripping Lengths**

Minimum:
 Programmable to 0.01" (.254mm)

Maximum:
 39" (1000mm) wire dependent

■ **Electrical Requirements**

110V 1 Phase 60 Hz. or 220V 1 Phase 50 Hz.

■ **Size**

Length:
 34" (864mm)

Width:
 23" (585mm)

Height:

24 1/4" (615mm), 37" (940mm) with monitor

■ **Shipping Weight:**

Approximately 400 lbs. (182kg)

Choose From Four Different Cutterheads



Single-blade

The CS-326 comes equipped with your choice of a single-, dual-, three-blade or pneumatic two-blade cutterhead.



Dual-blade

The standard single-blade cutterhead is ideal for everyday use. Multiple blades allow cutting and stripping to be handled by separate blades, expanding your wire processing capabilities and helping extend blade life.



Three-blade



Pneumatic two-blade

With the three-blade cutterhead, two pairs of stripping blades process at incredibly high speeds without sacrificing flexibility. The pneumatic two-blade is perfect for more challenging cutting applications such as Kevlar® or steel.

**PREMIUM WIRE
 DE-REELER**

**MODEL
 45-712**

- For use with any wire processing equipment and 6" to 16" dia. wire reels
- Non-motorized de-reeling for any processor
- Avoids wire tangles and over spooling
- For use with wire 8 AWG - 30 AWG (8mm² - 0.05mm²)



Technical Data

Dimensions: (L, W, H)
 27.5" x 16" x 32.5"
 (700mm x 410mm x 830mm)

Weight: 15 lbs. (7 Kg)

Spool Size: 6" - 16" diameter (152 - 406mm)
 11-1/2" (290mm) wide

**LIGHT DUTY
 PREFEEDER**

**MODEL
 45-714A**

- Allows for the automatic dereeling of wire from spool.
- Designed for use with any bench top automatic wire-processing machine.
- Features a belt feed material transport and infinitely adjustable speed control.
- Optimizes the performance of wire processing system by eliminating wire tangles, wire mis-feeds, and length variations.



Technical Data

Spool Weight: Up to 60 lbs. (27 Kg.)

Spool Size: Diameter to 18 inches (450mm), Width to 14 inches (350mm)

Material Size: Up to .200 inches (5mm)

Feed Rate: Up to 7.3 ft./min. (2.2 M/Sec.)

Dimensions: 22" W x 22" H x 16.5" D (560mm x 560mm x 420mm)

Weight: 47 lbs (22 Kg)

Electrical Requirements: 110V, 60Hz, 2 amp or 220V, 50 Hz, lamp (220V is extra charge)

**MEDIUM DUTY
 PREFEEDER**

**MODEL
 PF-6**

- Eliminates wire tangles, misfeeds and length variations
- Payout rate of up to 4 M/Sec. (820Ft./Min)
- Improved loading features including: arm lock, improved side-plate design, and easier wire threading
- 3 pulley wire storage
- Strong control arm and excellent motor controls



Technical Data

Spool Weight: Max: 150 lbs. (68 kg)

Spool Diameter: Max: 24" (609 mm)

Spool Width: Max: 16" (406 mm)

Weight (Approx): 285 lbs. (129.5 kg)

Dimensions: 46" x 21" x 53"
 (1,170 x 533 x 1,340mm)

Electrical Requirements: 110V/60hz./1 ph or 220V/50 hz./1ph

Feed Rates: Max: 820 ft/min. (4 M/sec)

Air Requirements: None

Optional Equipment Available:

- 9 Pulley Wire Storage
- Cradle Rollers for Heavy Reels
- Special Kits for Ribbon Wire and Ignition Wire
- Spare Parts Kit

**BENCH TOP
 WIRE MARKER**

**MODEL
 WM-6/B**

Features

- Hot stamp marking of wire & cable
- Flexible, easy installation bench top design
- Simple-to-change foil and type designs
- Completely adjustable controls for dwell, temperature, and pressure
- Different models available for benchtop or machine mounting
- Features two stamping anvils with separate foil for end marking, or more efficient continuous marking



Technical Data

Electrical Requirements: 110V/120V, 1 phase 60 Hz or 220V, 1 phase 50 Hz

Pneumatic Requirements: 80 PSI (5-8 bar)

Air Consumption: 1.26 Ft³/Hour
 (36 Lt/Hr) at 4,000 Cy/Hr

Dimensions: Height 24.5" (620 mm)
 Depth 18" (460 mm)
 Width 16.5" (420 mm)

Weight: 38 lbs (17 Kg)
 Wire O.D. – 0.038" - 0.750 (1mm-19mm)

Max. # of Characters: 16 on each end, total is 32 - curved and flat type available

**BENCH TOP WHEEL
 HOT STAMP MARKER**

**MODEL
 KIP 20**

- The fastest intermittent hot stamp wire printer on the market today
- Utilizes full-size 40 character typewheels
- Prints horizontally or vertically along wire
- Quick-change fixture system minimizes set-up time and maximizes printing speed
- Prints on command from virtually any wire processor, cutter, stripper or terminator
- Operates remotely or with foot pedal
- Prints on sizes from .038" to 750: OD



Technical Data

Wire Size: 0.038" - 0.750" (1-19mm)

Operation: Pneumatic/electric, remote signal operation in conjunction with in-line wire processor

Printing Method: Hot Stamp process, full size:40 characters per typewheel

Printing Area: 1 line x 2.9" on
 Sizes .038" to .05" OD
 Note: wire sizes over .250" OD
 Require special fixtures

Power Requirement: 110V standard 220V available

Air Requirement: 100 PSI / 5 CFM

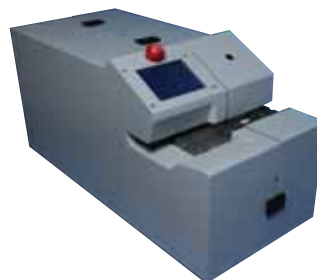
Dimensions: Height 14" Height 35.5 cm
 Width 7" Width 17.7 cm
 Depth 15" Depth 38.1 cm

Weight: Net 52 lbs. Shipping (24 Kg)

**BENCH TOP
 LABEL PRINTER**

**MODEL
 SWIFMARK**

- Allows for labels to be printed on demand and to be automatically wrapped onto wires.
- Can be utilized as a stand alone wire label printer, or may be interfaced with one of Artos processing machines including the CS-326 to provide a fully automatic wire processing solution.
- Label printing ensures clear marking of nearly all wire types, and regardless of insulation color.
- Wires from 0.60 (1.5mm) to 0.75 (19mm) can be labeled by the Swiftmark system. With a cycle time of 2.5 seconds, the Swiftmark set a new standard in efficiency and productivity.
- Labels are available in various sizes and colors to meet your exact requirements.
- Can process finished wire including labeling as close to 0.5 inch (12mm) from terminated wire end.



Technical Data

Wire Size: 0.060 to 0.75 Inch (1.0 – 19.0 mm)

Label Widths: 0.5 to 2.0 inch (12 – 50 mm)

Dimensions: 30 x 15 x 31 inches (508 x 31 x 788mm)

Weight: 60 lbs. (28 Kg)

Cycle time: 2.5 seconds

Power: 110V or 220V 50/60 Hz.

Printhead: 300 d.p.i.

MOTORIZED LINEAR LONG WIRE COLLECTORS MODEL AL-SERIES

- Independent Operation - does not require special interface for most machines
- Special brake feature eliminates belt rubs on your wire
- Collection length up to 10 meters (32 ft.)
- Simple installation and operation
- Optional batch sorter available
- Collectors efficiently bundle long wires processed on the wire cutting and stripping machine
- Conveyor belt supports and carries wire down length of collector



Technical Data

Conveyor Lengths:

Model AL-1500	1.5 Meters (5 Ft.)
Model AL-3000	3 Meters (9 Ft.)
Model AL-5000	5 Meters (16 Ft.)
Model AL-10000	10 Meters (32 Ft.)

Wire Sizes: 0.35 mm² to 16.0mm² (22 AWG - 6 AWG)
 Application Dependent

Electrical Requirements: 110V, 1 phase 60 Hz or 220V, 1 phase 50 Hz

Pneumatic Requirements: 5.5 Bar (80 PSI)

MOTORIZED DUAL BOWL WIRE COILING SYSTEM MODEL CD-11

- Coils wires for easy handling
- Two bowl sizes to choose from
- Collects wires up to 100 ft. (30M) depending on wire diameter
- For use with Artos Models CS-26, CS-27 & CS-326
- Dual Bowl System allows one bowl to be loaded by the wire processing machine while the second bowl is unloaded



Technical Data

Bowl Diameter: Choose from 12" or 16" (304mm or 406mm)

Electrical Requirements: 110V, 1 phase 60 Hz or 220V, 1 phase 50 Hz

Air Requirements: 5.5 Bar (80 PSI)

Weight: 56 Kg (125 lbs.)

Fully integrated features allow for optimal performance without significant setup.

MOTORIZED LEVEL WIND COILING SYSTEM MODEL CD-15

- Fully integrated with CS-326; automatically adjusts to CS-326 feed speeds.
- Adjustable inner coiling diameter
- Wire lock for consistent coil shape
- Automatic coil pin retraction and guard opening
- Cart casters included for easy movement
- Level winding system guides the cable as it is being coiled, controlling coil thickness providing neat bundles for packing



Technical Data

Cable Diameter: Up to 12.5mm (1/2 inch)

Inner Coil Diameter: Adjustable from 100 to 305mm (4 to 12 inches)

Coil Height: Adjustable to 100 mm (4 inches)

Electrical Requirements: 110V, 1 phase 60 Hz or 220V, 1 phase 50 Hz

Pneumatic Requirements: 6 Bar (80 PSI)

Dimensions: W: 1016mm x H: 1118mm x D: 591mm (40 x 44 x 23.25 inches)

Total Cable Length: Up to 100M (Actual maximum lengths may vary depending on cable diameter and weight)

Wire Processing Evaluation Form

This form is designed to provide assistance in determining the wire processing equipment which will best suit your needs. Please complete this form as it applies to your application, and return to Artos following the instructions below. Include a minimum of 10 inches of each wire.

Project Information (Check one):

- New Project
- Increase In Volume
- Replacement Equipment

Estimated Volume (Check one):

- Less 100/Day
- 100 – 1,000/Day
- 1,000 – 10,000/Day
- Over 10,000/Day

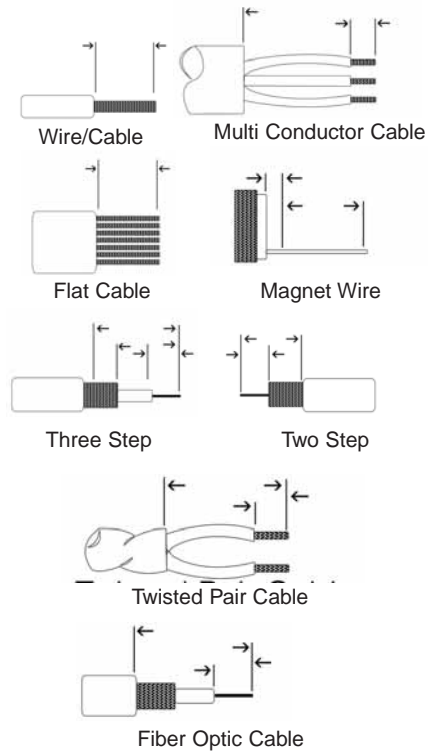
Wire Type (Select All Needed):

- Discrete Wire
 - Min AWG _____
 - Max AWG _____
- Multi-Conductor
 - Min OD _____
 - Max OD _____
- Coax Wire
- Twisted Pair
- Fiber Optic Wire
- Magnet Wire
- Flat Cable
 - Total Width _____
 - Cond. Pitch _____
- Other _____

Required Processing (Select all needed)

- Cutting to Length
- Stripping
- Inner Jacket Stripping
- Wire Marking
- Termination
- Doubling
- Weather Seal
- Twist / Tinning
- Other (Describe): _____

Stripping Requirements: Please write the appropriate dimensions for each cable type:



End User Information:

Please enclose a business card or complete the following information:

Name: _____

Company: _____

Address: _____

City, St, Zip: _____

Phone: _____ Fax: _____

Email: _____

Send sample material to:
 Ship via UPS

Artos Engineering Co.
 Attn: Machine Sales Department
 W228N2792 Duplainville Rd.
 Waukesha, WI 53186 USA

The First Name in Wire Processing Systems

Artos leads the way with machine innovations and an industry wide commitment about designing value into your next wire processing machine.

Contact your local Artos sales engineer for additional product information on our full line of wire processing equipment.



CS-327



STX



MTX Series 5



MTX Series 10